

# byes

A brand of **bemis group.**



## 2024

INTERNATIONAL EDITION

*"Discover Your  
Energy"*

[www.byes.com.tr](http://www.byes.com.tr)



## About Us

With 30 years of experience, the byes brand, which is under the roof of the Bemis group, aims to bring a breath of fresh air to the sector with its creative, dynamic and visionary perspective, following world trends and needs, and offering products and services that will benefit its stakeholders.

Our company, which has adopted the mission of export-oriented growth with its existing foreign connections and international market experience, provides services to the whole of Europe with its Polish branch. Our company, which also specializes in e-commerce sales, exhibits its products in many marketplaces in Europe.

## Our Vision

Our mission is to create brand loyalty and become a recognized brand in the global market by offering innovative products and services at universal quality standards by using modern technologies to meet the current and potential needs of our business partners.

## Our Mission

To offer our customers in the electricity and lighting energy sector a wide range of products where aesthetics and robustness meet in the quality denominator and at prices that respond to market conditions.

# DIŐ TİCARET

Byes, which is taking firm steps towards becoming a brand in the world market, has targeted its exports to 30 countries as exports to 35 countries by 2024.

Byes products meet its users in the global market through distributors, agents and Byes showrooms.

With the international fairs and promotional activities it participates in, Byes continues its efforts to increase brand awareness in the world.



## Export Department

+90 542 773 72 94

+90 224 363 30 65

info@byes.com.tr

export@byes.com.tr

www.byes.com.tr

## PORTS



## MARBLE QUARRIES



## TUNNELS



### QUALITY MANAGEMENT

---

- Production in accordance with international standards (ISO 9001:2015 Certificate)
- High quality

### RESEARCH & DEVELOPMENT

---

- Cost-effective and innovative production
- Numerous patent applications



NELS



HEAVY INDUSTRY



CONSTRUCTIONS

## CUSTOMER FOCUS

---

- Reliable service
- Excellent price-performance
- Functional design
- Customized solutions
- Short delivery times

## GLOBAL ASSET

---

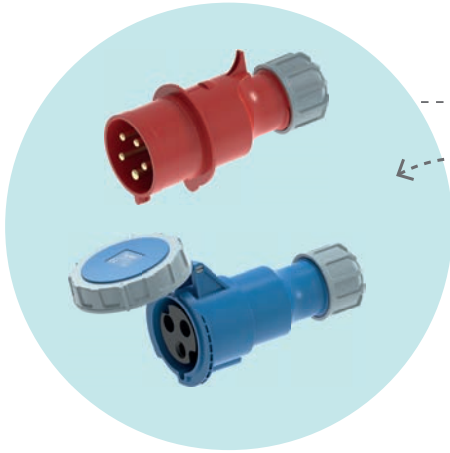
- 50% exports
- Global business partners
- Fast and reliable dealer network



lyee

*Discover your energy*

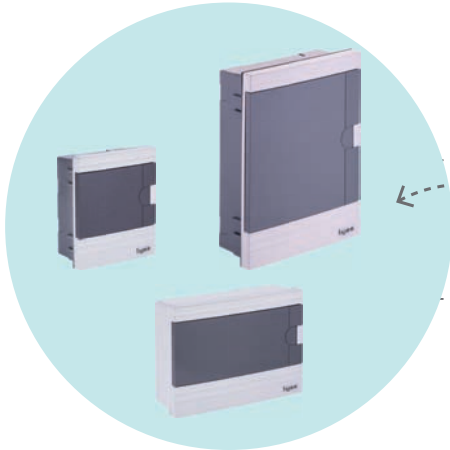
With **30 years** of experience in our modern production facilities, more than **100** experienced We export more than **3000 quality products** that we produce with our employees to **30 countries**.



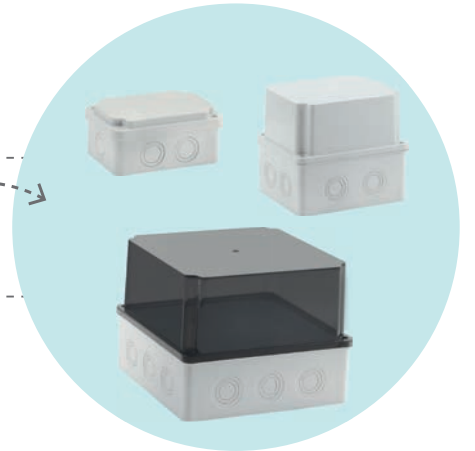
**New Brand**  
**CEE Norm Series**  
16A / 32A IP44 / IP67



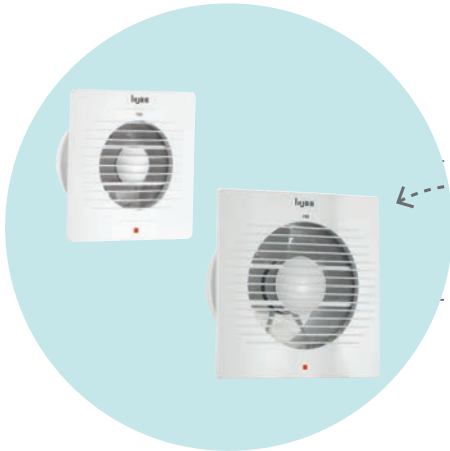
**New Brand**  
**Waterproof Socket Series**  
Surface Mounted



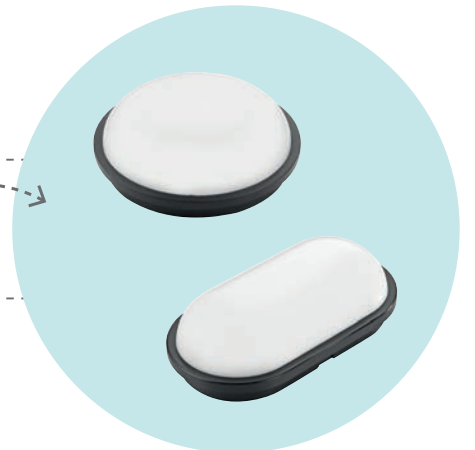
**New Brand**  
**Distribution Board Series**  
Flush and Surface Mounted



**New Brand**  
**Thermoplastic Junction Box Series**  
Transparent Cover and Opaque Cover



**New Brand**  
**Bathroom and Kitchen Aspirators**  
Series



**New Brand**  
**Led Lighting Series**  
Waterproof

# byes

RUBBER MONOPHASE 1x16A. (2P+E) 200/250V.

**SAFE | ERGONOMIC | STRONG**

Monophase and Threephase Rubber Sockets  
Now safer, more ergonomic, more durable with byes!





# Rubber Monophase

1x16A. (2P+E) 200/250V.



Product Code: BY10-100

IP44 1/16A. 220V.  
Rubber Straight Plug

Box 40 Ad. Pack 400 Ad.



Product Code: BY10-102

IP44 1/16A. 220V.  
Rubber Connector Socket

Box 25 Ad. Pack 250 Ad.



Product Code: BY10-101

IP44 1/16A. 220V.  
Rubber Angled Plug

Box 36 Ad. Pack 360 Ad.



Product Code: BY10-107

IP44 1/16A. 220V.  
Angled Plug with Rubber Handle

Box 36 Ad. Pack 360 Ad.



Product Code: BY10-108

IP44 1/16A. 220V.  
Rubber Angled Single Mounted  
Socket

Box 20 Ad. Pack 100 Ad.



Product Code: BY10-103

IP44 1/16A. 220V.  
Rubber Surface Mounted  
Socket

Box 24 Ad. Pack 120 Ad.



Product Code: BY10-104

IP44 1/16A. 220V.  
Rubber 2 Ways Socket

Box 15 Ad. Pack 75 Ad.



Product Code: BY10-105

IP44 1/16A. 220V.  
Rubber 3 Ways Socket

Box 12 Ad. Pack 60 Ad.

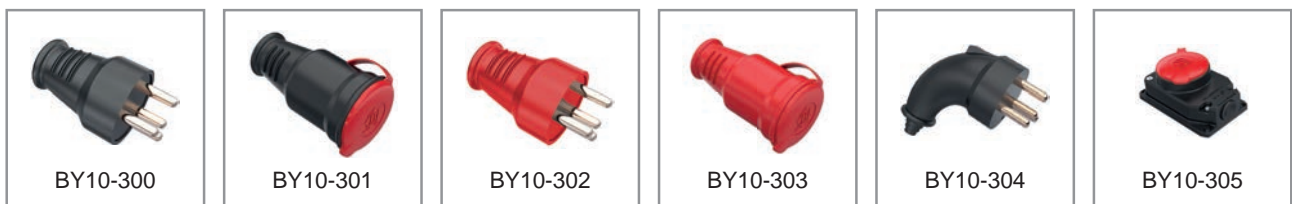


Product Code: BY10-106

IP44 1/16A. 220V.  
Rubber 4 Ways Socket

Box 10 Ad. Pack 50 Ad.

Product Code	Product Description	Bemis Code	IP	Box	Pack
BY10-300	Straight Plug	BK1-2504-4011	IP44	20	160
BY10-301	Connector Socket	BK1-2504-4314	IP55	15	120
BY10-302	Straight Plug (Red)	BK1-2504-4012	IP44	20	160
BY10-303	Connector Socket (Red)	BK1-2504-4315	IP55	15	120
BY10-304	Angled Plug	BK1-2504-4023	IP44	16	128
BY10-305	Surface Mounted Socket	BK6-2504-4511	IP55	14	112
BY10-306	2way Socket	BK6-2504-4612	IP55	5	60
BY10-307	2way Socket (1 tri + 1 mono)	BK6-2504-4611	IP55	5	60
BY10-308	3way Socket	BK6-2504-4615	IP55	6	48
BY10-309	3way Socket (2 tri + 1 mono)	BK6-2504-4614	IP55	6	48
BY10-310	3way Socket (1 tri + 2 mono)	BK6-2504-4613	IP55	6	48
BY10-311	4way Socket	BK6-2504-4618	IP55	8	40
BY10-312	4way Socket (2 tri + 2 mono)	BK6-2504-4616	IP55	8	40
BY10-313	4way Socket (3 tri + 1 mono)	BK6-2504-4617	IP55	8	40
BY10-314	Panel Mounted Socket (Plastic)	BP2-2504-4415	IP44	18	144
BY10-315	Screwless Connection Socket (Plastic)	BP2-2504-4440	IP44	18	144
BY10-316	Rail Socket (Plastic)	BR1-2504-2711	IP20	8	64
BY10-317	Surface Mounted Socket (Plastic)	BP2-2504-4516	IP44	6	72



# Rubber & Plastic Threephase (3P+E) 380V.



## 3x16A. (3P+E) 380V.

Product Code	Product Description	Bemis Code	IP	Box	Pack
BY10-200	3/16A. 380V. Straight Plug Siyah	BK6-1504-2011	IP44	20	160
BY10-201	3/16A. 380V. Connector Socket	BK6-1504-2311	IP44	20	160
BY10-202	3/16A. 380V. Panel Mounted Socket	BK6-1504-2410	IP44	10	120
BY10-203	3/16A. 380V. Angled Plug	BK6-1504-2022	IP44	18	144
BY10-204	3/16A. 380V. Rubber Surface Mounted Socket	BK6-1504-2511	IP44	8	64
BY10-205d	3/16A. 380V. Plastic Surface Mounted Socket	BK6-1504-2512	IP44	6	72



## 3x32A. (3P+E) 380V.

Product Code	Product Description	Bemis Code	IP	Box	Pack
BY10-205	3/32A. 380V. Straight Plug	BK6-3504-2011	IP44	15	180
BY10-206	3/32A. 380V. Connector Socket	BK6-3504-2311	IP44	12	144
BY10-207	3/32A. 380V. Panel Mounted Socket	BK6-3504-2410	IP44	12	144
BY10-208	3/32A. 380V. Angled Plug	BK6-3504-2022	IP44	18	216
BY10-209	3/32A. 380V. Rubber Surface Mounted Socket	BK6-3504-2511	IP44	8	96
BY10-210	3/32A. 380V. Plastic Surface Mounted Socket	BK6-3504-2512	IP44	6	108



## Flat Plastic Threephase Series (3P+E) 380V.

Product Code	Product Description	Bemis Code	IP	Box	Pack
BY10-218	<b>16/25A.</b> Flat Straight Plug	BY1-1504-2011	IP44	15	180
BY10-219	<b>16/25A.</b> Flat Connector Socket	BY1-1504-2311	IP44	15	120
BY10-220	<b>16/25A.</b> Flat Surface Mounted Socket	BY1-1504-2511	IP44	12	96

Product Code	Product Description	Bemis Code	IP	Box	Pack
BY10-221	<b>25/40A.</b> Flat Straight Plug	BY1-2504-2011	IP44	12	96
BY10-222	<b>25/40A.</b> Flat Connector Socket	BY1-2504-2311	IP44	8	64
BY10-223	<b>25/40A.</b> Flat Surface Mounted Socket	BY1-2504-2511	IP44	7	56

Product Code	Product Description	Bemis Code	IP	Box	Pack
BY10-224	<b>40/63A.</b> Flat Straight Plug	BY1-4504-2011	IP44	8	64
BY10-225	<b>40/63A.</b> Flat Surface Mounted Socket	BY1-4504-2511	IP44	4	32





## Waterproof Surface Mounted Sockets

*The complete solution for dusty and damp areas!  
For areas that require care and attention!*

The damp floor switch and socket series has been developed for damp and dusty environments such as bathrooms, balconies, terraces, poolside and garages.

Its robust body is resistant to impacts and low temperatures,

IP44 protection feature.

Protected against water splashes and dust.

Suitable for Surface Mounted Use.



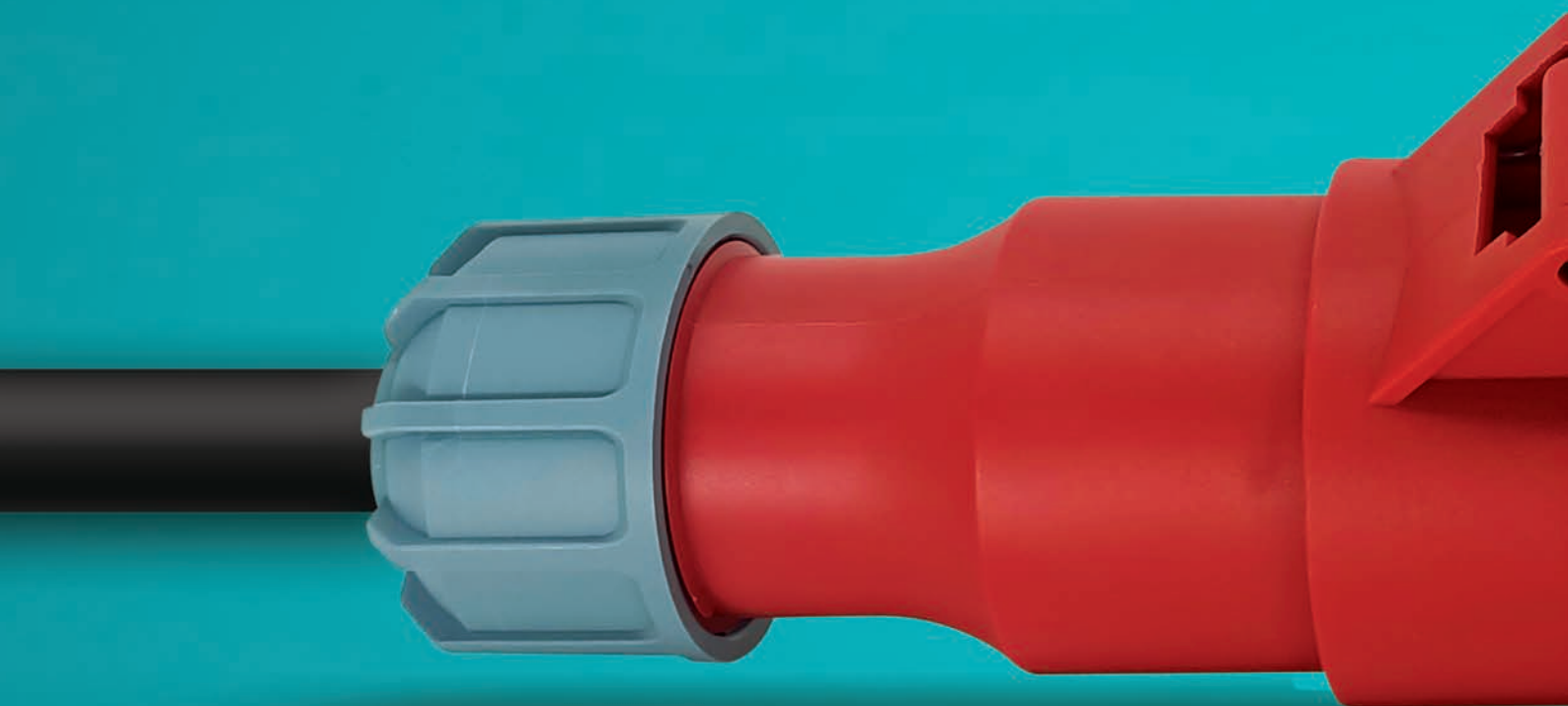
# Waterproof Surface Mounted Sockets



Product Code	Product Description	IP	Box	Pack
BY45-100	Surface Mounted Switch	IP44	15	150
BY45-101	Surface Mounted Vavien	IP44	15	150
BY45-102	Surface Mounted Covered Grounded Socket	IP44	15	150
BY45-103	Surface Mounted Bell Button	IP44	15	150
BY45-104	Surface Mounted Commitator	IP44	15	150
BY45-105	Surface Mounted Door Automatic	IP44	15	150
BY45-106	Surface Mounted Light	IP44	15	150
BY45-107	Surface Mounted Normal Socket with Cover	IP44	15	150
BY45-108	Surface Mounted Covered Grounded Socket with UPS	IP44	15	150
BY45-109	Surface Mounted Vavien + Covered Grounded Socket	IP44	10	100
BY45-110	Surface Mounted Switch + Covered Grounded Socket	IP44	10	100
BY45-111	Surface Mounted Double Covered Grounded Socket	IP44	10	100
BY45-112	Surface Mounted Commitator + Covered Grounded Socket	IP44	10	100
BY45-113	Surface Mounted 2-Ups Covered Grounded Socket	IP44	10	100
BY45-114	Surface Mounted Switch + Covered Grounded Socket with UPS	IP44	10	100

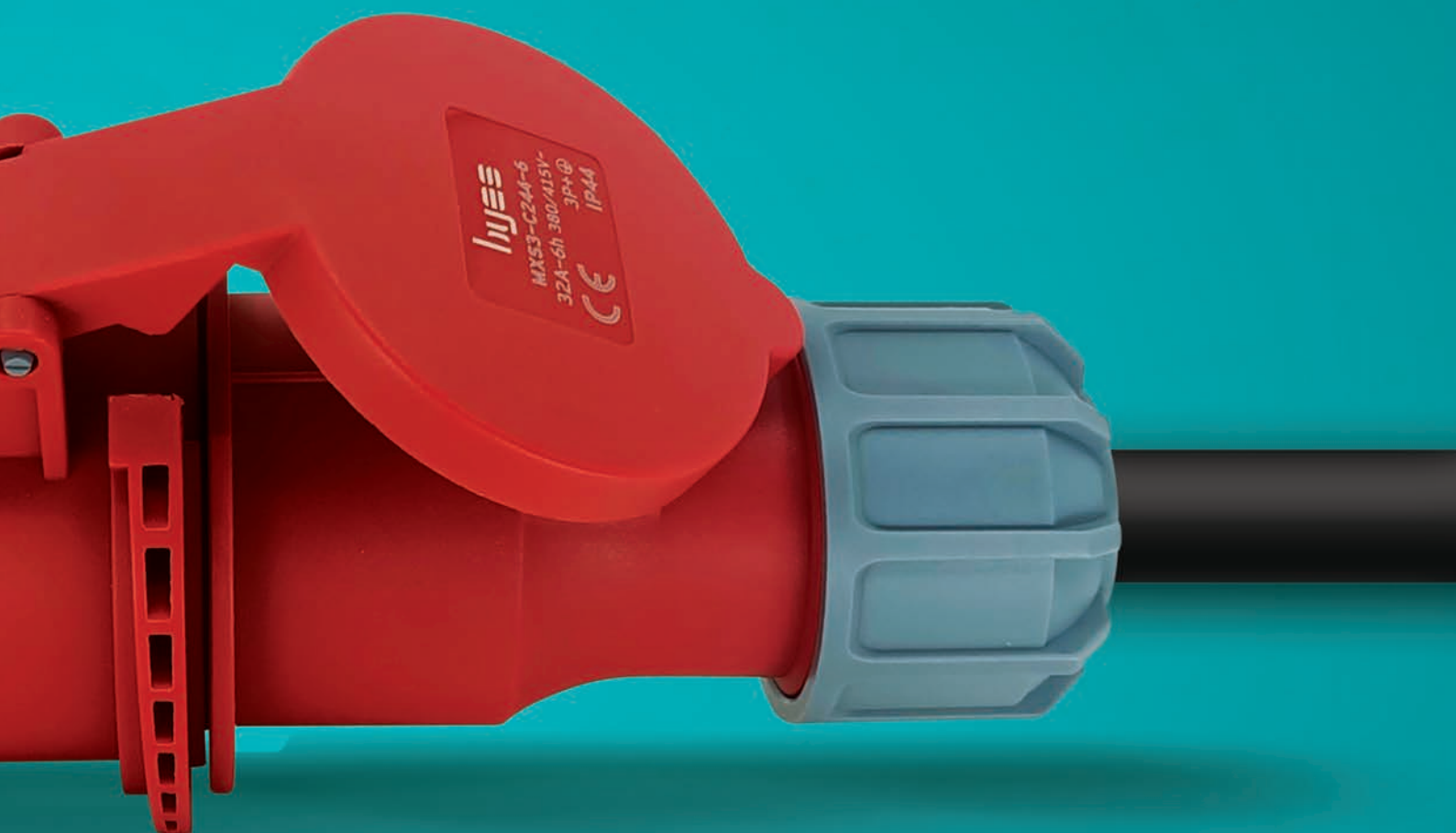


# byes



# CEE Norm Plug & Socket Series

16A. / 32A. - IP44 / IP67



Product Code	Product Description	IP	Box	Pack
BY50-100	3/16A. Straight Plug	IP44	10	180
BY50-121	3/16A. Connector Socket	IP44	10	180
BY50-163	3/16A. Panel Mounted Socket	IP44	15	180
BY50-142	3/16A. 90° Angled Surface Socket	IP44	3	54



Product Code	Product Description	IP	Box	Pack
BY50-106	3/16A. Straight Plug	IP67	10	180
BY50-127	3/16A. Connector Socket	IP67	10	180
BY50-169	3/16A. Panel Mounted Socket	IP67	15	180
BY50-148	3/16A. 90° Angled Surface Socket	IP67	3	54





Product Code	Product Description	IP	Box	Pack
BY50-103	3/32A. Straight Plug	IP44	10	180
BY50-124	3/32A. Connector Socket	IP44	10	180
BY50-166	3/32A. Panel Mounted Socket	IP44	15	180
BY50-145	3/32A. 90° Angled Surface Socket	IP44	3	54



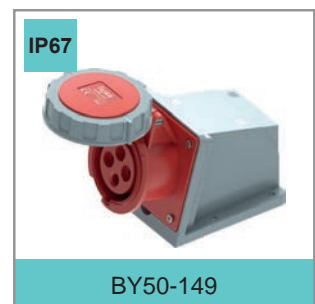
Product Code	Product Description	IP	Box	Pack
BY50-109	3/32A. Straight Plug	IP67	10	180
BY50-130	3/32A. Connector Socket	IP67	10	180
BY50-172	3/32A. Panel Mounted Socket	IP67	15	180
BY50-151	3/32A. 90° Angled Surface Socket	IP67	3	54



Product Code	Product Description	IP	Box	Pack
BY50-101	4/16A. Straight Plug	IP44	10	180
BY50-122	4/16A. Connector Socket	IP44	10	180
BY50-164	4/16A. Panel Mounted Socket	IP44	15	180
BY50-143	4/16A. 90° Angled Surface Socket	IP44	3	54



Product Code	Product Description	IP	Box	Pack
BY50-107	4/16A. Straight Plug	IP67	10	180
BY50-128	4/16A. Connector Socket	IP67	10	180
BY50-170	4/16A. Panel Mounted Socket	IP67	15	180
BY50-149	4/16A. 90° Angled Surface Socket	IP67	3	54



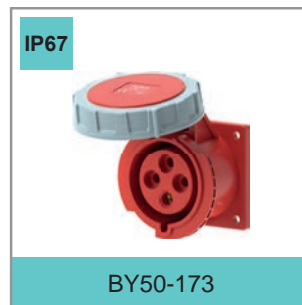
**CEE Norm 4/32A.**  
(3P+E) 380V. 50/60 Hz 6h



Product Code	Product Description	IP	Box	Pack
BY50-104	4/32A. Straight Plug	IP44	10	180
BY50-125	4/32A. Connector Socket	IP44	10	180
BY50-167	4/32A. Panel Mounted Socket	IP44	15	180
BY50-146	4/32A. 90° Angled Surface Socket	IP44	3	54



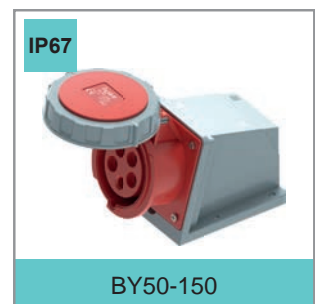
Product Code	Product Description	IP	Box	Pack
BY50-110	4/32A. Straight Plug	IP67	10	180
BY50-131	4/32A. Connector Socket	IP67	10	180
BY50-173	4/32A. Panel Mounted Socket	IP67	15	180
BY50-152	4/32A. 90° Angled Surface Socket	IP67	3	54



Product Code	Product Description	IP	Box	Pack
BY50-102	5/16A. Straight Plug	IP44	10	180
BY50-123	5/16A. Connector Socket	IP44	10	180
BY50-165	5/16A. Panel Mounted Socket	IP44	15	180
BY50-144	5/16A. 90° Angled Surface Socket	IP44	3	54



Product Code	Product Description	IP	Box	Pack
BY50-108	5/16A. Straight Plug	IP67	10	180
BY50-129	5/16A. Connector Socket	IP67	10	180
BY50-171	5/16A. Panel Mounted Socket	IP67	15	180
BY50-150	5/16A. 90° Angled Surface Socket	IP67	3	54



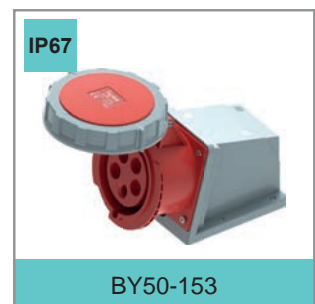
**CEE Norm 5/32A.**  
(3P+E) 380V. 50/60 Hz 6h



Product Code	Product Description	IP	Box	Pack
BY50-105	5/32A. Straight Plug	IP44	10	180
BY50-126	5/32A. Connector Socket	IP44	10	180
BY50-168	5/32A. Panel Mounted Socket	IP44	15	180
BY50-147	5/32A. 90° Angled Surface Socket	IP44	3	54

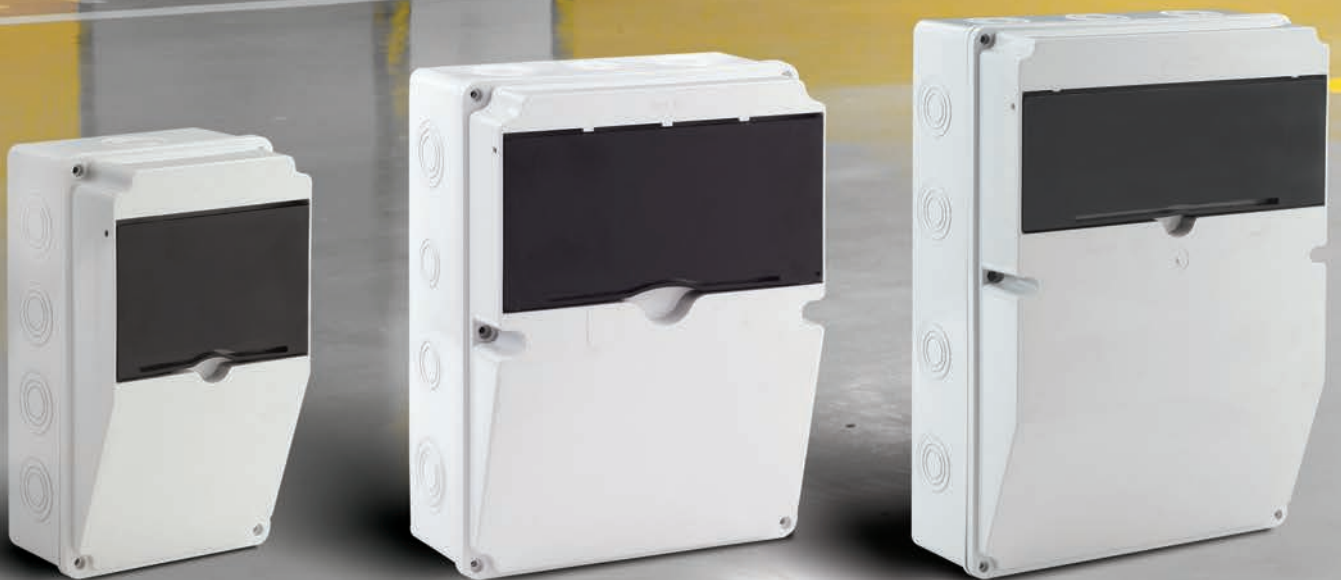


Product Code	Product Description	IP	Box	Pack
BY50-111	5/32A. Straight Plug	IP67	10	180
BY50-132	5/32A. Connector Socket	IP67	10	180
BY50-174	5/32A. Panel Mounted Socket	IP67	15	180
BY50-153	5/32A. 90° Angled Surface Socket	IP67	3	54



## ABS COMBINATION BOXES

Combination boxes are used in all electrical installation areas that need socket combination boxes and fuse boxes such as factories, workshops and industrial areas, construction sites, business centers and offices, warehouses, parking lots, common technical areas.



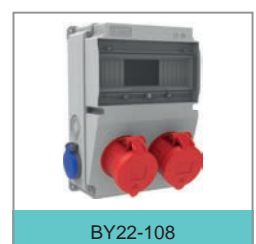
# ABS Combination Boxes



Product Code	Product Description	Dimensions	IP	Box	Pack
BY20-100	Empty Combination Box (ABS)	220x130x115	IP44	1	12
BY20-101	3x25A 1 pcs. Front + 1x16A 2 pcs. Side	220x130x115	IP44	1	12
BY20-102	5x16A 1 pcs. Front + 1x16A 2 pcs. Side	220x130x115	IP44	1	12
BY20-103	3x25A 380V 1 pcs. Front + 1x16A 2 pcs. Side	220x130x115	IP44	1	12
BY20-104	3/16A 380V 1 pcs. Front + 1x16A 2 pcs. Side	220x130x115	IP44	1	12
BY20-105	3/32A 380V 1 pcs. Front + 1x16A 2 pcs. Side	220x130x115	IP44	1	12
BY20-106	5x16A 380V 1 pcs. Front + 1x16A 2 pcs. Side	220x130x115	IP44	1	12
BY20-107	5/32A 380V 1 pcs. Front + 1x16A 2 pcs. Side	220x130x115	IP44	1	12
BY20-108	4/32A 380V 1 pcs. Front + 1x16A 2 pcs. Side	220x130x115	IP44	1	12



Product Code	Product Description	Dimensions	IP	Box	Pack
BY22-100	Empty Combination Box (ABS)	310x225x120	IP44	1	6
BY22-101	Front 2 pcs Side 2 pcs Hole Empty Combination Box	310x225x120	IP44	1	6
BY22-102	Front 2 pcs Perforated 1/16A 2 pcs Side	310x225x120	IP44	1	6
BY22-103	3x25A 380V 2 pcs. Front + 1x16A 2 pcs. Side	310x225x120	IP44	1	6
BY22-104	3/16A 380V 2 pcs. Front + 1x16A 2 pcs. Side	310x225x120	IP44	1	6
BY22-105	3/32A 380V 2 pcs. Front + 1x16A 2 pcs. Side	310x225x120	IP44	1	6
BY22-106	5x16A 380V 2 pcs. Front + 1x16A 2 pcs. Side	310x225x120	IP44	1	6
BY22-107	5x32A 380V 2 pcs. Front + 1x16A 2 pcs. Side	310x225x120	IP44	1	6
BY22-108	4x32A 380V 2 pcs. Front + 1x16A 2 pcs. Side	310x225x120	IP44	1	6



hyes

## Flush and Surface Mounted FUSE BOXES

*We produce aesthetic solutions for your walls!*  
Fuse Boxes Series are available in two types, flush and surface mounted, and with opaque cover options. waiting to take a stylish place in your spaces.





**Surface Mounted Distribution Boards**

Product Code	Product Description	IP	Box	Pack
BY30-102	6 Module Surface Mounted Distribution Boards	IP44	1	20
BY30-103	9 Module Surface Mounted Distribution Boards	IP44	1	16
BY30-104	12 Module Surface Mounted Distribution Boards	IP44	1	16
BY30-105	18 Module Surface Mounted Distribution Boards	IP44	1	10
BY30-106	24 Module Surface Mounted Distribution Boards	IP44	1	8
BY30-107	36 Module Surface Mounted Distribution Boards	IP44	1	5



BY30-102



BY30-103



BY30-104



BY30-105



BY30-106



BY30-107

**Flush Mounted Distribution Boards**

Product Code	Product Description	IP	Box	Pack
BY30-112	6 Module Flush Mounted Distribution Boards	IP44	1	20
BY30-113	9 Module Flush Mounted Distribution Boards	IP44	1	16
BY30-114	12 Module Flush Mounted Distribution Boards	IP44	1	16
BY30-115	18 Module Flush Mounted Distribution Boards	IP44	1	10
BY30-116	24 Module Flush Mounted Distribution Boards	IP44	1	8
BY30-117	36 Module Flush Mounted Distribution Boards	IP44	1	5



BY30-112



BY30-113



BY30-114



BY30-115



BY30-116



BY30-117

Product Code	Product Description	Dimensions	IP	Box	Pack
BY25-146	Minibox Lighting Junction Box	80x40x35	IP65	30	360
BY25-120	Square Antigron Junction Box	85x85x40	IP65	20	240
BY25-121	Opaque Cover Thermoplastic Junction Box (Straight)	85x85x50	IP65	1	140
BY25-122	Opaque Cover Thermoplastic Junction Box (Screwed)	85x85x50	IP65	1	140
BY25-123	Opaque Cover Thermoplastic Junction Box	80x120x55	IP65	1	78
BY25-124	Opaque Cover Thermoplastic Junction Box	100x100x50	IP65	1	112
BY25-125	Opaque Cover Thermoplastic Junction Box	110x110x74	IP65	1	130
BY25-126	Opaque Cover Thermoplastic Junction Box	120x150x80	IP65	1	30
BY25-127	Opaque Cover Thermoplastic Junction Box	150x150x80	IP65	1	30
BY25-128	Opaque Cover Thermoplastic Junction Box	190x150x80	IP65	1	30
BY25-129	Opaque Cover Thermoplastic Junction Box	210x120x74	IP65	1	48
BY25-130	Opaque Cover Thermoplastic Junction Box	200x200x80	IP65	1	24
BY25-131	Opaque Cover Thermoplastic Junction Box	260x150x80	IP65	1	40
BY25-132	Opaque Cover Thermoplastic Junction Box	280x210x74	IP65	1	24
BY25-133	Opaque Cover Thermoplastic Junction Box	380x280x90	IP65	1	14

Product Code	Product Description	Dimensions	IP	Box	Pack
BY25-134	Opaque Cover Thermoplastic Junction Box	80x120x120	IP65	1	39
BY25-135	Opaque Cover Thermoplastic Junction Box	110x110x120	IP65	1	80
BY25-136	Opaque Cover Thermoplastic Junction Box	120x150x140	IP65	1	18
BY25-137	Opaque Cover Thermoplastic Junction Box	150x150x140	IP65	1	18
BY25-138	Opaque Cover Thermoplastic Junction Box	190x150x140	IP65	1	18
BY25-139	Opaque Cover Thermoplastic Junction Box	210x120x160	IP65	1	24
BY25-140	Opaque Cover Thermoplastic Junction Box	200x200x160	IP65	1	12
BY25-141	Opaque Cover Thermoplastic Junction Box	260x150x130	IP65	1	26
BY25-142	Opaque Cover Thermoplastic Junction Box	280x210x160	IP65	1	12
BY25-143	Opaque Cover Thermoplastic Junction Box	380x280x130	IP65	1	10



# Thermoplastic Junction Boxes Transparent Cover



Product Code	Product Description	Dimensions	IP	Box	Pack
BY25-100	Transparent Cover Thermoplastic Junction Box	80x120x55	IP65	1	78
BY25-101	Transparent Cover Thermoplastic Junction Box	110x110x74	IP65	1	130
BY25-102	Transparent Cover Thermoplastic Junction Box	120x150x80	IP65	1	30
BY25-103	Transparent Cover Thermoplastic Junction Box	150x150x80	IP65	1	30
BY25-104	Transparent Cover Thermoplastic Junction Box	190x150x80	IP65	1	30
BY25-105	Transparent Cover Thermoplastic Junction Box	210x120x74	IP65	1	48
BY25-106	Transparent Cover Thermoplastic Junction Box	200x200x80	IP65	1	30
BY25-107	Transparent Cover Thermoplastic Junction Box	260x150x80	IP65	1	24
BY25-108	Transparent Cover Thermoplastic Junction Box	280x210x74	IP65	1	24
BY25-109	Transparent Cover Thermoplastic Junction Box	380x280x90	IP65	1	14



Product Code	Product Description	Dimensions	IP	Box	Pack
BY25-110	Transparent Cover Thermoplastic Junction Box	80x120x120	IP65	1	39
BY25-111	Transparent Cover Thermoplastic Junction Box	110x110x120	IP65	1	80
BY25-112	Transparent Cover Thermoplastic Junction Box	120x150x140	IP65	1	18
BY25-113	Transparent Cover Thermoplastic Junction Box	150x150x140	IP65	1	18
BY25-114	Transparent Cover Thermoplastic Junction Box	190x150x140	IP65	1	18
BY25-115	Transparent Cover Thermoplastic Junction Box	210x120x160	IP65	1	24
BY25-116	Transparent Cover Thermoplastic Junction Box	200x200x160	IP65	1	12
BY25-117	Transparent Cover Thermoplastic Junction Box	260x150x130	IP65	1	26
BY25-118	Transparent Cover Thermoplastic Junction Box	280x210x160	IP65	1	12
BY25-119	Transparent Cover Thermoplastic Junction Box	380x280x130	IP65	1	10



# hyes

## *PLASTIC CABLE REEL*



PRODUCT CODE  
BY15-100



PRODUCT CODE  
BY15-103



PRODUCT CODE  
BY15-101



**Plastic Cable Reel**  
(280mm Diameter)

Product Code	Product Description	Cable	IP	Box
BY15-100	Empty Reel 4way Socket - 50m Capacity	Empty Reel	IP20	1
BY15K1001	4way Socket	20M 3*1,5	IP20	1
BY15K1002	4way Socket	30M 3*1,5	IP20	1
BY15K1003	4way Socket	40M 3*1,5	IP20	1



**Plastic Cable Reel**  
(280mm Diameter With Thermal Fuse)

Product Code	Product Description	Cable	IP	Box
BY15-103	Empty Reel 4way Socket - Thermal Fuse - 50m Capacity	Empty Reel	IP20	1
BY15K1031	4way Socket - Thermal Fuse	20M 3*1,5	IP20	1
BY15K1032	4way Socket - Thermal Fuse	30M 3*1,5	IP20	1
BY15K1033	4way Socket - Thermal Fuse	40M 3*1,5	IP20	1



**Plastic Cable Reel**  
(280mm Diameter With Thermal Fuse)

Product Code	Product Description	Cable	IP	Box
BY15-101	<b>Empty Reel - Spring Cover</b> - Thermal Fuse - 50m Capacity	Empty Reel	IP44	1
BY15K1011	4way Socket - <b>Spring Cover</b> - Thermal Fuse	20M 3*1,5	IP44	1
BY15K1012	4way Socket - <b>Spring Cover</b> - Thermal Fuse	30M 3*1,5	IP44	1
BY15K1013	4way Socket - <b>Spring Cover</b> - Thermal Fuse	40M 3*1,5	IP44	1



**Plastic Cable Reel**  
(240mm Diameter With Thermal Fuse)

Product Code	Product Description	Cable	IP	Box
BY15-102	<b>Empty Reel</b> - 4way Socket - Thermal Fuse - 25m Cap.	Empty Reel	IP20	1
BY15K1021	4way Socket - Thermal Fuse	15M 3*1,5	IP20	1
BY15K1022	4way Socket - Thermal Fuse	25M 3*1,5	IP20	1



**Plastic Cable Reel**  
(240mm Diameter With Thermal Fuse)

Product Code	Product Description	Cable	IP	Box
BY15-104	<b>Empty Reel - Spring Cover</b> - Thermal Fuse - 25m Cap.	Empty Reel	IP44	1
BY15K1041	4way Socket - <b>Spring Cover</b> - Thermal Fuse	15M 3*1,5	IP44	1
BY15K1042	4way Socket - <b>Spring Cover</b> - Thermal Fuse	25M 3*1,5	IP44	1



**Plastic Cable Reel**  
(5 Metre Cable - Thermal Fuse)

Product Code	Product Description	Cable	IP	Box
BY15-100-T	1/16A. 4way Socket - Thermal Fuse	5M 3*1	IP20	1



Product Code	Voltaj	Airflow	Speed / Rpm	Power	Box	Pack
BY60-100	220-240V / 50-60Hz	100 m3/h	2450 rpm	12W	1	20
BY60-101	220-240V / 50-60Hz	120 m3/h	1900 rpm	15W	1	20



## Outside LED Lighting

Product Code	Product Description	Power	Light Color	Lumen	IP	Box	Pack
BY70-100	Oval White	20W	6400K	2000 lm	IP65	1	20
BY70-101	Sircular White	20W	6400K	2000 lm	IP65	1	20





*Designing  
Producing  
Testing  
Deliver t o y o u*





## Discover Your Energy

With 30 years of experience, the byes brand, which is under the roof of Bemis group, aims to bring a breath of fresh air to the sector with its creative, dynamic and visionary perspective, following world trends and needs, and offering products and services that will benefit its stakeholders.

**Address:**

Alaaddinbey Mh. Pazar Cd.  
No. 10/2 16110 Nilüfer/Bursa

**Phone:**

+90 224 363 30 65

**Mail:**

[export@byes.com.tr](mailto:export@byes.com.tr)

**Web:**

[www.byes.com.tr](http://www.byes.com.tr)